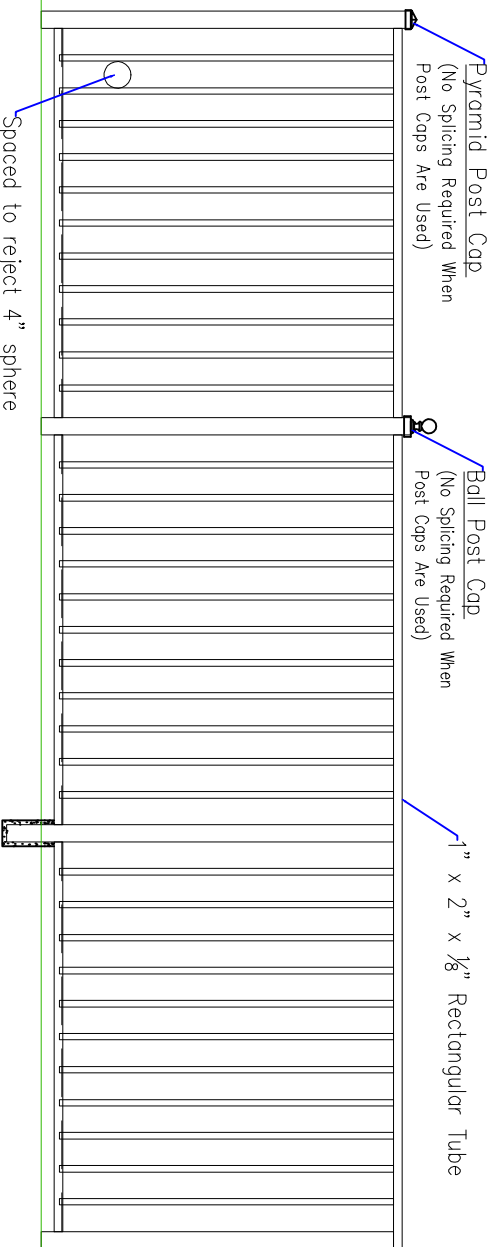
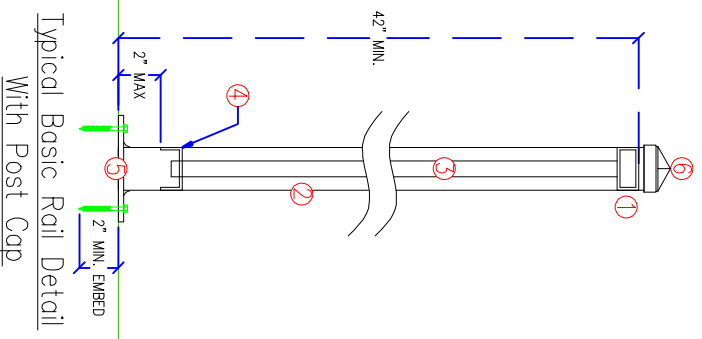
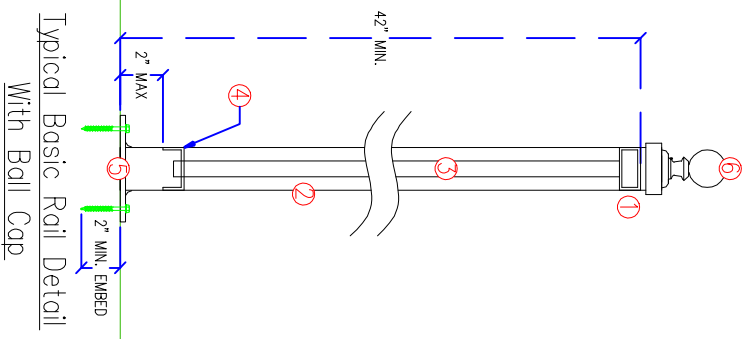


- Material**
- 1) See Top Cap Styles
 - 2) 1½" or 2" SQ. x .093 (Depends on cap selection)
 - 3) 3.4" SQ. x .0625 pickets
 - 4) 2" x 1" x .125 punched channel
 - 5) 5" x 5" x ¼" Flange Plate
 - 6) 1" x 2" x ⅛" rectangular tube

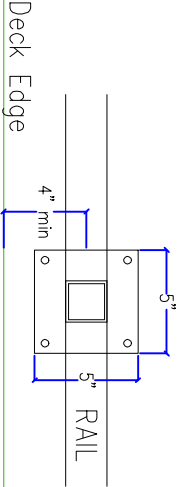
See web site for many different Frieze options
www.SEOIC.COM

- Notes:**
- 1) **Material:** EXTRUDED ALUMINUM GRADE 6000 SERIES T5 OR T6 AS AVAILABLE
 - 2) **FABRICATION:** ALL RAIL SECTIONS TO BE WELDED.
 - 3) **FINISH:** ALL PRODUCTS TO BE POWDER COATED STANDARD COLOR UNLESS OTHER FINISHING METHOD IS REQUIRED.

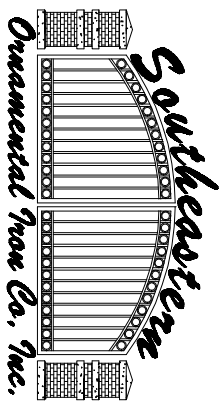
See web site for many different design options
www.SEOIC.COM



SEO — Basic Rail



See "Mounting Styles" for other options



SEO — Basic Rail

11307 Distribution Ave East
 Jacksonville, FL 32256
 904-292-0933 ph.
 904-292-0588 fax